

## SUPA-SPAN IGLOO SHELTERS

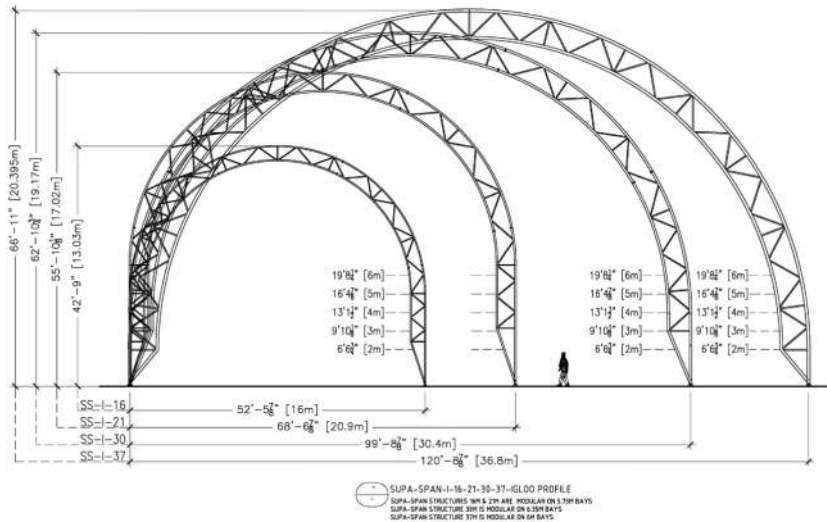
As a leading Fabric Structure Specialist, Global remains at the cutting edge of design, engineering and technology and is known for providing innovative structure solutions of the highest quality.

The Supa-Span Igloo Series, offers large, clear span designs that span up to 30m/100ft in width and are designed to accommodate the largest mining vehicles.

The Supa-Span Igloo offers a versatile design that is suitable for a number of applications such as Aircraft Hangars, Warehousing and Workshop facilities.

## SUPA-SPAN IGLOO BENEFITS

- Spans from 16m/53ft - 30m/100ft in width (very high internal height - larger spans available on request)
- Industry leading 15 year warranty
- Precision engineering to Australian and International standards
- Premium PVC fabric with PVDF top coat
- High strength steel frame with Hot Dip Galvanised Finish
- Designed for both semi-permanent and permanent installations
- Modular design allows for unlimited length
- Rapid, low-cost installation
- Translucent fabric options provide a well-lit, energy efficient, interior space
- Fully patterned and tensioned Fabric for a drum tight finish
- Accessories available such as; doors, lighting, ventilation, HVAC, insulation liners



Supa-Span Igloo profile is designed with a curved frame assembly ranging from 16m/53ft - 30m/100ft standard span. Larger spans can be engineered to meet your exact needs.

## SUPA-SPAN IGLOO (SS-I) DATA AND SPECIFICATIONS

Width	Length	Bay Spacing	Peak Height Outer
16m / 52' 5 1/8"	Modular on 5.75m Bays	5.75 m	13m / 42' 9"
21m / 68' 6 7/8"	Modular on 5.75m Bays	5.75m	17.1m / 55' 10 1/8"
30m / 99' 8 7/8"	Modular on 6.35m Bays	6.35m	19.2m / 62' 10 3/4"

## STANDARD FABRIC

**AUS - Premium Ferrari 802S - PV Polyester**

- 15 Year Warranty
- Weight - 850 GSM
- Colour - White Translucent

**USA - Premium Ferrari 902**

- 10 Year Warranty
- Weight - 950 GSM
- Colour - White

## OTHER FABRIC OPTIONS

- Combinations of colour or translucent and blackout to create skylight effect
- White blackout (opaque)
- Alu outer / black inner (Ferrari 702)

- Other colours (upon request)
- Ferrari 702S - 7 year warranty (cost saving)
- PE Fabrics - (cost saving)
- 802S Colour Options : Mastic, Champagne and Sandy Beige

## STRUCTURAL FRAME

- 15 Year Warranty
- High strength structural steel truss
- Hot dip galvanized finish (for extreme corrosion protection)

- Fabricated under SO9001:2008
- Grade 8.8 galvanized bolts
- Galvanized bracing cables

**Structural Frame Options:** 3 coat paint finish on request

## ACCESSORY OPTIONS

- Hard side walls
- Internal fabric liners (improved insulation and acoustics)
- Acoustic fabric liners
- Personal doors

- Vehicle access doors
- Lighting systems
- Ventilation systems (louvers and fans)

## FOUNDATION OPTIONS

- Chemset anchors or cast-in bolts
- Concrete footings - bored piers, strip or pad footings

- Earth anchors - steel stakes / screw piles
- Ballast - concrete weights (for interim options)



## SUPA-SPAN CURVED

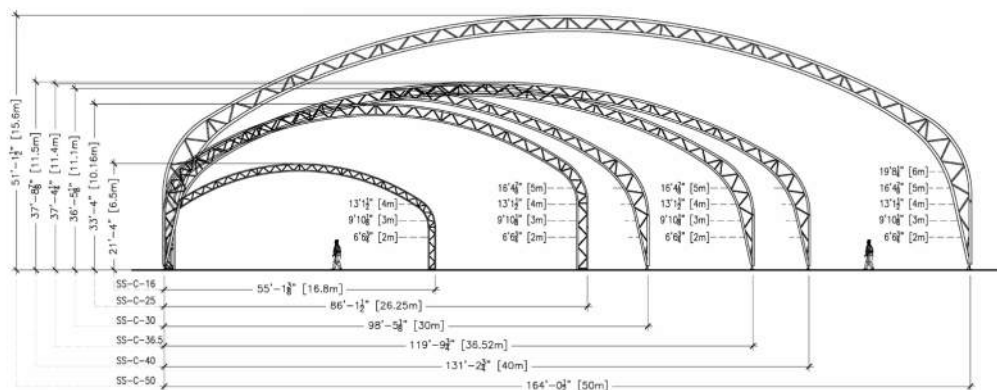
As a leading International Fabric Structure Specialist, Global remains at the cutting edge of design, engineering and technology and is known for providing innovative structure solutions of the highest quality.

The Supa-Span Curved structures offer large, clear span designs that span up to 50m/164ft in width. The Supa-Span Curved Series is a versatile design that is suitable for a number of applications including Sports and Recreation Facilities, Aircraft Hangars, Warehousing and Workshops.

## SUPA-SPAN CURVED BENEFITS:

-  Spans from 16m/53ft to 50m/164ft in width (very high internal height - larger spans available on request)
-  Precision engineering to Australian and International standards
-  Premium PVC fabric with PVDF top coat
-  High strength steel frame with Hot Dip Galvanised Finish
-  Designed for both permanent and interim installations
-  Modular design allows for unlimited length
-  Rapid, low-cost installation
-  Translucent fabric options provide a well-lit, energy efficient, interior space
-  Fully patterned and tensioned fabric for a drum tight finish
-  Accessories available such as; doors, lighting, ventilation, HVAC, insulation liners





SUPA-SPAN-C-16-25-30-36.5-40-50-CURVED PROFILE  
SUPA-SPAN STRUCTURE 16' TO 164' MODULAR ON 3M BAYS  
SUPA-SPAN STRUCTURES 25M, 30M, 36.5M & 40M ARE MODULAR ON 6M BAYS

Supa-Span C profile is designed with a curved frame assembly ranging from 16m/53ft to 50m/164ft standard span. Larger spans can be engineered to meet your exact needs.

## SUPA-SPAN CURVED (SS - C) DATA AND SPECIFICATIONS

Width	Length	Bay Spacing	Peak Height Outer
16m/ 55' 13/8" (inside)	Modular on 3m/9.8ft Bays	3.0m/9.8"	6.5m/21.3ft
25m/82'0 1/4" (inside)	Modular on 6m/19'5"	6.0m/19'5"	10.16m/33ft
30m/100'11 3/8"	Modular on 6m/19'5"	6.0m/19'5"	11.1m/36ft
36.5m/119'9 1/64"	Modular on 6m/19'5"	6.0m/19'5"	11.4m/37ft
40m/131'2 3/4"	Modular on 6m/19'5"	6.0m/19'5"	11.5m/38ft
50m/157'5 3/4"	Modular on 6m/19'5"	6.0m/19'5"	15.6m/51ft

## STANDARD FABRIC

### AUS - Premium Ferrari 802S - PV Polyester

- 15 Year Warranty
- Weight - 850 GSM
- Colour - White Translucent

### USA - Premium Ferrari 902

- 10 Year Warranty
- Weight - 950 GSM
- Colour - White

## OTHER FABRIC OPTIONS

- Combinations of colour or translucent and blackout to create skylight effect
- Alu outer / black inner (Ferrari 702)
- White blackout (opaque)
- Additional colours available on request
- Ferrari 702S - 7 year warranty (cost saving)
- PE Fabrics - (cost saving)
- 802S Colour Options - Mastic, Champagne and Sandy Beige

## STRUCTURAL FRAME

- 15 Year Warranty
- High strength structural steel truss
- Hot dip galvanized finish
- (for extreme corrosion protection)
- Fabricated under SO9001:2008

- Grade 8.8 galvanized bolts
- Galvanized bracing cables

**Structural Frame Options:**  
3 coat paint finish on request

## ACCESSORY OPTIONS

- Hard side walls
- Lighting systems
- Acoustic fabric liners
- Personal doors
- Vehicle access doors
- Ventilation systems (louvers and fans)
- Internal fabric liners (improved insulation and acoustics)

## FOUNDATION OPTIONS

- Chemset anchors or cast-in bolts
- Concrete footings - bored piers, strip or pad footings
- Earth anchors - steel stakes / screw piles
- Ballast - concrete weights (for interim options)













## SUPA-SPAN STRAIGHT

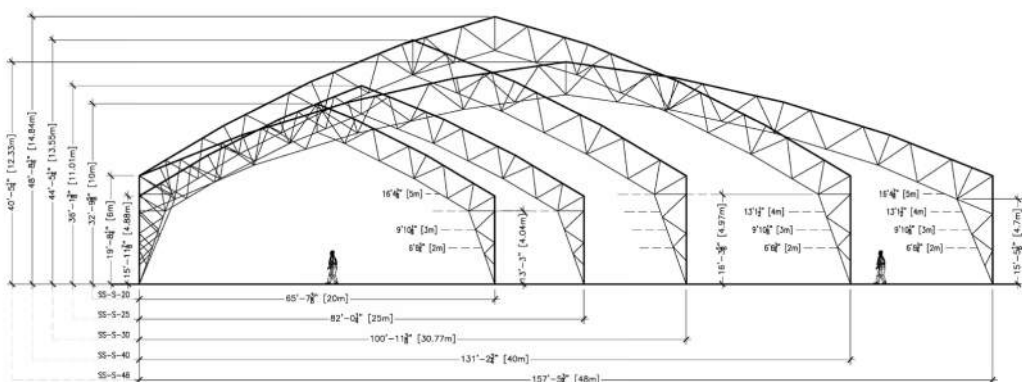
As a leading International Fabric Structure Specialist, Global remains at the cutting edge of design, engineering and technology and is known for providing innovative structure solutions of the highest quality.

Our Supa-Span Straight structures offer large, clear span designs that span up to 50m/164ft in width, with larger sizes available upon request. The Supa-Span Straight series is a versatile design that is suitable for a number of applications including aircraft hangars, sports and recreation facilities and warehousing purposes.



## SUPA-SPAN STRAIGHT BENEFITS:

-  Spans from 20m/66ft to 50m/164ft in width (high internal height - larger spans available on request)
-  Precision engineering to Local and International Building and Engineering Codes
-  Premium PVC fabric with PVDF top coat
-  High strength steel frame with Hot Dip Galvanised Finish
-  Designed for both permanent and interim installations
-  Modular design allows for unlimited length
-  Rapid, low-cost installation
-  Translucent fabric options provide a well-lit, energy efficient, interior space
-  Fully patterned and tensioned Fabric for a drum tight finish
-  Accessories available include; doors, lighting, ventilation, HVAC, insulation liners



— SUPA-SPAN-S-20-25-30-40-48-STRAIGHT PROFILE  
— SUPA-SPAN STRUCTURES ARE MODULAR ON 6M BAYS

Supa-Span S profile is designed with a high pitched roof and straight eave assembly ranging from 20m/66ft to 50m/164ft standard span. Larger spans can be engineered to meet your exact needs.

## SUPA-SPAN STRAIGHT (SS - S) DATA AND SPECIFICATIONS

Width	Length	Bay Spacing	Peak Height Outer
20m/65'7 3/4"	Modular on 6m Bays	6.00m / 19'5"	7.13m/23ft
25m/82'0 1/4"	Modular on 6m Bays	6.00m / 19'5"	8.23m/ 27ft
30m/100'11 3/4"	Modular on 6m Bays	6.00m / 19'5"	9.30m/31ft
40m/131'2 3/4"	Modular on 6m Bays	6.00m / 19'5"	12.40m/41ft
50m/157'5 3/4"	Modular on 6m Bays	6.00m / 19'5"	16.70m/55ft

## STANDARD FABRIC

### AUS - Premium Ferrari 802S - PV Polyester

- 15 Year Warranty
- Weight - 850 GSM
- Colour - White Translucent

### USA - Premium Ferrari 902

- 10 Year Warranty
- Weight - 950 GSM
- Colour - White

## OTHER FABRIC OPTIONS

- Combinations of colour or translucent and blackout to create skylight effect
- Alu outer / black inner (Ferrari 702)
- White blackout (opaque)
- Other colours (upon request)
- Ferrari 702S - 7 year warranty (cost saving)
- PE Fabrics - (cost saving)
- 802S Colour Options : Mastic, Champagne and Sandy Beige

## STRUCTURAL FRAME

- 15 Year Warranty
- High strength structural steel truss
- Hot dip galvanized finish
- (for extreme corrosion protection)
- Fabricated under SO9001:2008

- Grade 8.8 galvanized bolts
- Galvanized bracing cables

### Structural Frame Options:

- 3 coat paint finish on request

## ACCESSORY OPTIONS

- Hard side walls
- Lighting systems
- Acoustic fabric liners
- Personal doors
- Vehicle access doors
- Ventilation systems (louvers and fans)
- Internal fabric liners (improved insulation and acoustics)

## FOUNDATION OPTIONS

- Chemset anchors or cast-in bolts
- Concrete footings - bored piers, strip or pad footings
- Earth anchors - steel stakes / screw piles
- Ballast - concrete weights (for interim options)





Industry leading  
15 year warranty

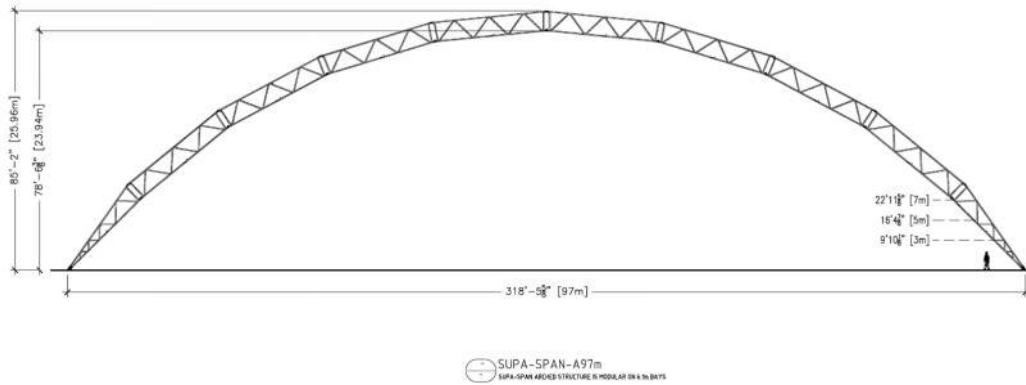
## SUPA-SPAN ARCHED SERIES

As a leading international fabric structure specialist, Global remains at the cutting edge of design, engineering and technology and is known for providing innovative structure solutions of the highest quality.

The Supa-Span Arched structures offer large, clear span designs that span 97m/318ft in width. The Supa-Span Arched Series is a versatile design that is suitable for a variety of applications including warehousing, sports and recreation, aircraft hangars, workshops and stockpiles.

## SUPA-SPAN ARCHED BENEFITS:

-  Spans of 97m/318 ft in width (very high internal height)
-  Industry leading 15 year warranty
-  Precision engineering to Australian and international standards
-  Premium PVC fabric with PVDF top coat
-  High strength steel frame with Hot Dip Galvanised Finish
-  Designed for both semi-permanent and permanent installations
-  Modular design allows for unlimited length
-  Rapid, low-cost installation
-  Translucent fabric options provide a well-lit, energy efficient, interior space
-  Fully patterned and tensioned Fabric for a drum tight finish
-  Accessories available such as; doors, lighting, ventilation, HVAC, insulation liners etc



Supa-Span A profile is designed as an arched frame assembly with 97m/318ft standard span. Smaller spans can be engineered to meet your exact needs.

## SUPA-SPAN ARCHED (SS - A) DATA AND SPECIFICATIONS

Width	Length	Bay Spacing	Peak Height Outer
97m/318ft	Modular on 6.1m / 20' 5 3/16" bays	6.1m / 20' 5 3/16"	25.96m / 85' 2 1/4"

## STANDARD FABRIC

- Premium Ferrari 802S - PV Coated Polyester
- Tensile strength: 280/280 daN/5cm
- Warranty: 15 Years
- Flame retardancy: AS/NZ1530.3 - M2/NFP-92-507
- Standard Colour: white translucent
- 802S Colour Options: mastic, champagne & sandy beige
- Weight: 850 GSM

## OTHER FABRIC OPTIONS

- Combinations of colour or translucent and blackout to create skylight effect
- Additional colours available on request
- Alu outer / black inner (Ferrari 702)
- Ferrari 702S - 7 year warranty (cost saving)
- White blackout (opaque)
- PE Fabrics - (cost saving)

## STRUCTURAL FRAME

- 15 Year Warranty
- Grade 8.8 galvanized bolts
- High strength structural steel truss
- Galvanized bracing cables
- Hot dip galvanized finish (for extreme corrosion protection)
- Structural Frame Options:  
3 coat paint finish on request
- Fabricated under SO9001:2008

## ACCESSORY OPTIONS

- Hard side walls
- Vehicle access doors
- Lighting systems
- Ventilation systems (louvers and fans)
- Acoustic fabric liners
- Internal fabric liners (improved insulation and acoustics)
- Personal doors

## FOUNDATION OPTIONS

- Chemset anchors or cast-in bolts
- Earth anchors - steel stakes / screw piles
- Concrete footings - bored piers, strip or pad footings
- Ballast - concrete weights (for interim options)















### SUPA-SPAN TALL

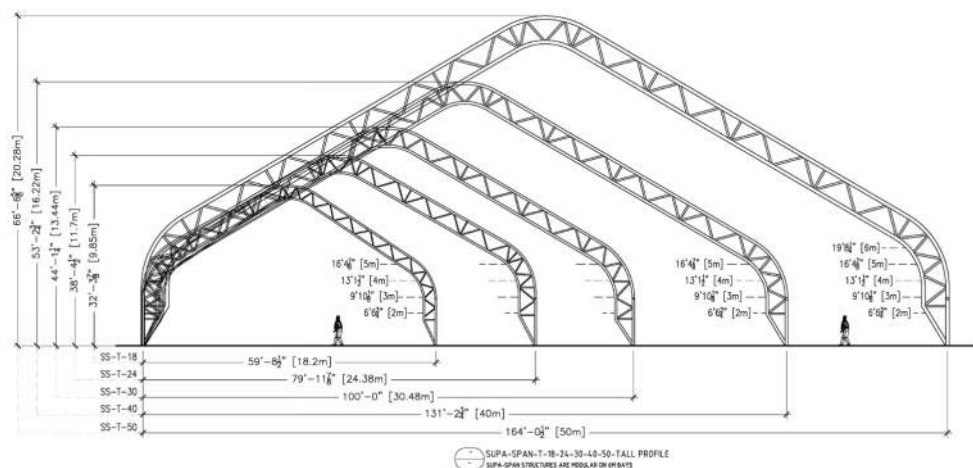
As a leading International Fabric Structure Specialist, Global remains at the cutting edge of design, engineering and technology and is known for providing innovative structure solutions of the highest quality.

Our Supa-Span Tall structures offer large, clear span designs that span up to 50m in width. The Supa-span Tall series is a versatile design that is suitable for a number of applications including aircraft hangars, sports and recreation facilities and warehousing purposes.



### SUPA-SPAN TALL BENEFITS:

-  Spans from 18m to 50m in width (high internal height - larger spans available on request)
-  Industry leading 15 year warranty
-  Precision engineering to Australian and International standards
-  Premium PVC fabric with PVDF top coat
-  High strength steel frame with Hot Dip Galvanised Finish
-  Designed for both permanent and interim installations
-  Modular design allows for unlimited length
-  Rapid, low-cost installation
-  Translucent fabric options provide a well-lit, energy efficient, interior space
-  Fully patterned and tensioned Fabric for a drum tight finish
-  Accessories available such as; doors, lighting, ventilation, HVAC, insulation liners



Supa-Span T profile is designed with a triangular curved high pitched roof and eave assembly ranging from 18m - 50m standard span. Larger spans can be engineered to meet your exact needs.

## SUPA-SPAN TALL (SS - T) DATA AND SPECIFICATIONS

Width	Length	Bay Spacing	Peak Height Outer
18m / 59'8 1/2"	Modular on 6m Bays	6m / 19'8 1/4"	9.85m / 32'3 7/8"
24m / 79'11 7/8"	Modular on 6m Bays	6m / 19'8 1/4"	11.7m / 38'4 1/2"
30m / 100'0"	Modular on 6m Bays	6m / 19'8 1/4"	13.44m / 44'1 1/4"
40m / 131'2 3/4"	Modular on 6m Bays	6m / 19'8 1/4"	16.22m / 53'2 3/4"
50m / 164'0 1/2"	Modular on 6m Bays	6m / 19'8 1/4"	20.28m / 66'6 5/8"

## STANDARD FABRIC

- Premium Ferrari 802S - PV Coated Polyester
- Warranty: 15 Years
- Standard Colour: white translucent
- Weight: 850 GSM

- Tensile strength: 280/280 daN/5cm
- Flame retardancy: AS/NZ 1530.3 - M2/NFP-92-507
- 802S Colour Options: mastic, champagne & sandy beige

## OTHER FABRIC OPTIONS

- Combinations of colour or translucent and blackout to create skylight effect
- Alu outer / black inner (Ferrari 702)
- White blackout (opaque)

- Other colours (upon request)
- Ferrari 702S - 7 year warranty (cost saving)
- PE Fabrics - (cost saving)

## STRUCTURAL FRAME

- 15 Year Warranty
- High strength structural steel truss
- Hot dip galvanized finish (for extreme corrosion protection)
- Fabricated under SO9001:2008

- Grade 8.8 galvanized bolts
- Galvanized bracing cables

**Structural Frame Options:**  
3 coat paint finish on request

## ACCESSORY OPTIONS

- Hard side walls
- Lighting systems
- Acoustic fabric liners
- Personal doors

- Vehicle access doors
- Ventilation systems (louvers and fans)
- Internal fabric liners (improved insulation and acoustics)

## FOUNDATION OPTIONS

- Chemset anchors or cast-in bolts
- Concrete footings - bored piers, strip or pad footings

- Earth anchors - steel stakes / screw piles
- Ballast - concrete weights (for interim options)