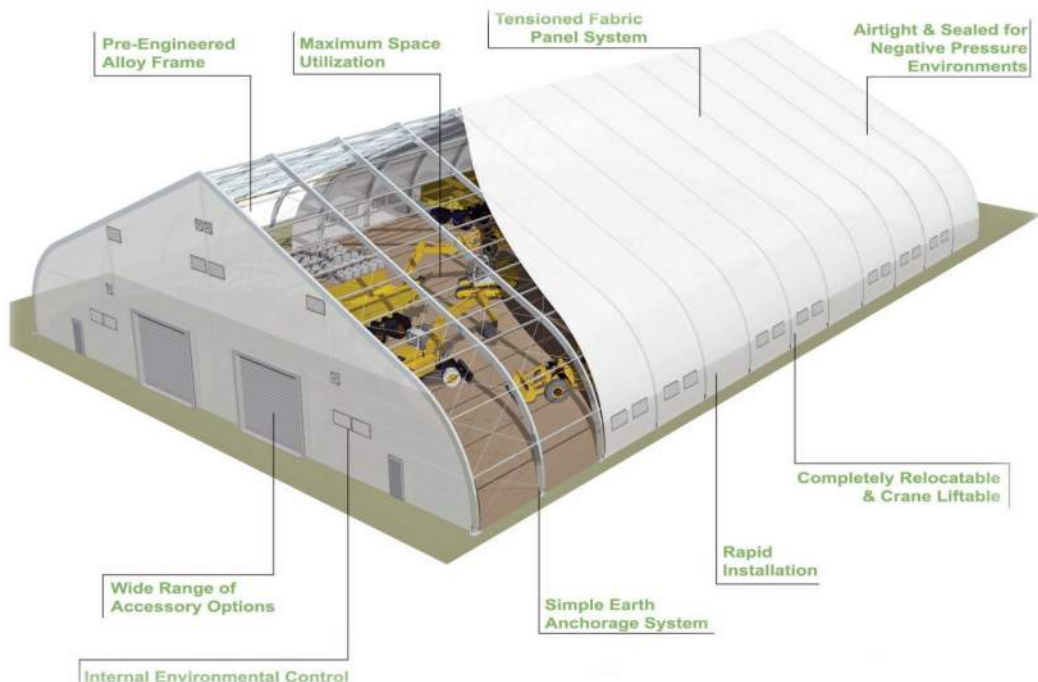









TFS 310



The **TFS 310** Series, are alloy framed structures, pre-engineered to the highest quality standards and are designed to suit a wide range of applications including Aviation, Mining & Energy, Sport and Recreation, Industrial and Remediation.

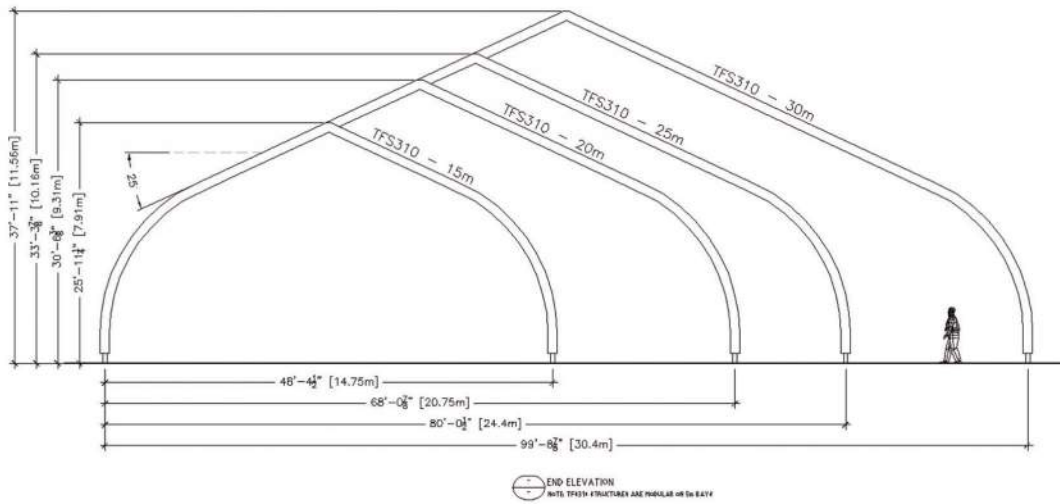
The TFS 310 incorporates a high pitched roof and curved profile assembly ranging from 15m /48' to 30m /100' standard span. A modular design for indefinite length can be constructed to meet your exact needs.

BENEFITS INCLUDE

-  Long-lasting, high strength corrosion resistant alloy frame
-  Engineered for both permanent and interim applications
-  Fully modular building system, clear span design
-  Rapidly installed and designed to be fully relocatable
-  Translucent fabric cladding options, provides a well-lit, energy efficient, interior with reduced operating costs



TFS 310



STANDARD SIZE OPTIONS

| | | | |
|---------------------|---|---------------------|---------------------------|
| Width: | (m) 15.0 20.0 25.0 30.0 | Length: | Modular on 5m/16.4ft bays |
| | (f) 48'4 1/2" 68'0 7/8" 80'0 1/2" 99'8 7/8" | | |
| Peak Height: | (m) 7.91 9.31 10.16 11.56 | Bay Spacing: | 5m/16.4ft |
| | (f) 25' 11 1/4" 30' 6 3/8" 33' 3 3/8" 37' 11" | | |

Standard Fabric: Premium Ferrari 702S PVC (750 GSM) White Translucent

Fabric Warranty: 7 years

Frame: Alloy T6061 Box Beam

Frame Warranty: 10 years

Engineering Standards: Meets Local and International Engineering and Building Standards

Fabric Retardancy: NFP 92-507 M2
 NFPA 701 Test 2
 DIN 4102-1 B1
 BS 7837
 AS/NZS 3837 Group 1
 AS/NZS 1530.3

FOUNDATION AND HOLD-DOWN OPTIONS

Anchors Bolts: Chemsets
 Cast-in Bolts

Steel Stake Option: for Interim Installations

Concrete Footings: Bored Piers
 Strip Pad

Concrete Weight Option: for Interim Installations

Screw Piles: N/A

Water Ballast Option: for Interim Installations

ACCESSORY OPTIONS

- Exit and personnel doors
- Vehicle access doors
- Vents, fans and louvers
- Solar panels
- Complete electrical and lighting packages
- Air-tight negative pressure environments
- Crane-lift packages
- Airconditioning/Heating